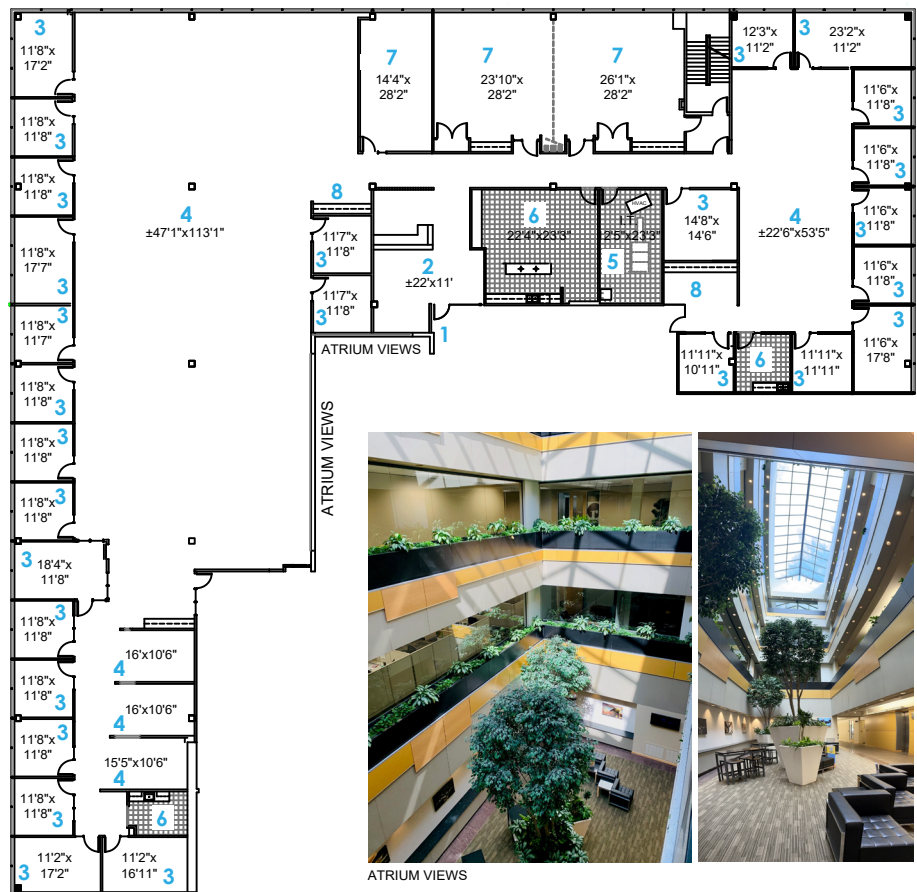


AT CENTERPOINT CORPORATE PARK



WORK ENVIRONMENTS

Link-Able Suites for Easy Expansion

Fountainhead Northwest

253.395.9226 www.fountainheadnorthwest.com

SUITE 200
19,957 RSF

- | | |
|-----------------|---------------------|
| (1) Entrance | (5) I.T. Room |
| (2) Reception | (6) Break Room |
| (3) Office | (7) Conference Room |
| (4) Open Office | (8) Copy Room |



ATRIUM MAIN LOBBY



ATRIUM SEATING LOUNGE



ATRIUM EATING LOUNGE



ATRIUM CONFERENCE ROOM



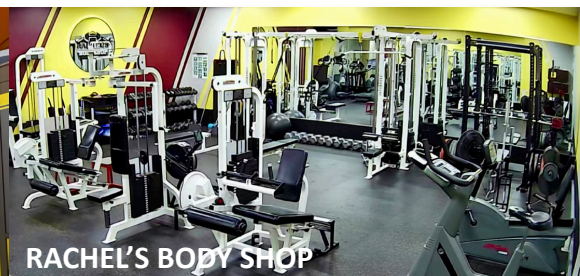
ATRIUM GYM



AMENITIES



YOUNG'S PANTRY CAFE



RACHEL'S BODY SHOP



BRIGHT HORIZONS



FOOD TRUCKS



SKOODER'S HOTDOGS



ONSITE NATURE WALK ROUTES



NEARBY SHOPPING MALL



ONSITE TRANSPORTATION ROUTES

CLOSE TO EVERYTHING

Shopping, hotels, restaurants, entertainment, schools and housing are just a short drive away.

ACCESS TO FOUR MAJOR HIGHWAYS

Interstate 405, Interstate 5, Interstate 405 and Highway 167.

SHORT DRIVING DISTANCES

Southcenter (5 minutes), Kent Station (5 minutes), Sea-Tac (8 minutes), Seattle (20 minutes), Bellevue (25 minutes) and Tacoma (28 minutes).