

CASCADE EAST

AT CENTERPOINT CORPORATE PARK



Open & Collaborative

WORK ENVIRONMENTS

Large Contiguous Spaces for Growing Companies

Pre-Built Insta-Suites for Smaller Companies

Link-Able Suites for Easy Expansion

Twin 8-Story Class A Office

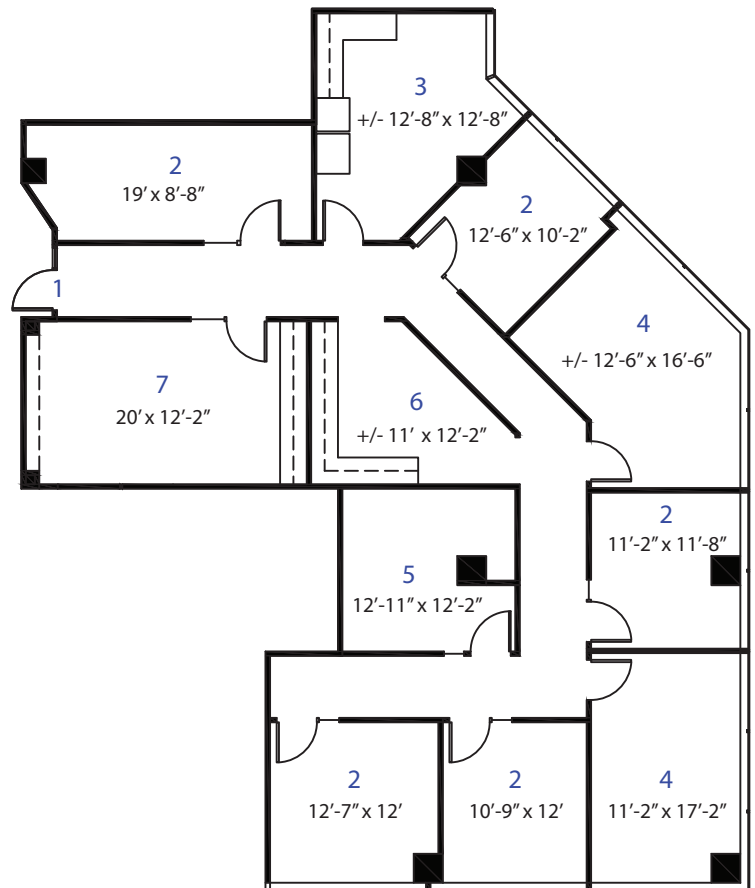
Fountain and Central Pedestrian Promenade



FOUNTAINHEAD NORTHWEST LLC

6811 S. 204th Street, Suite 110, Kent, WA 98032

253.395.9226 www.fountainheadnorthwest.com



SUITE 610
2,929 RSF

- (1) Entry
- (2) Office
- (3) Break Room
- (4) Executive Office
- (5) Storage
- (6) Copy Room
- (7) Conference Room



AMENITIES



Cascade East Colonnade



SEA-TAC AIRPORT



RACHEL'S BODY SHOP



BRIGHT HORIZONS



FOOD TRUCKS



SKOODER'S HOTDOGS



ONSITE NATURE WALK ROUTES



Cascade East Lobby



CONFERENCE CENTER ROOM RENTALS



ONSITE TRANSPORTATION ROUTES



Cascade East Picnic Table

CLOSE TO EVERYTHING

Shopping, hotels, restaurants, entertainment, schools and housing are just a short drive away.

ACCESS TO FOUR MAJOR HIGHWAYS

Interstate 405, Interstate 5, Interstate 405 and Highway 167.

SHORT DRIVING DISTANCES

Southcenter (5 minutes), Kent Station (5 minutes), Sea-Tac (8 minutes), Seattle (20 minutes), Bellevue (25 minutes) and Tacoma (28 minutes).