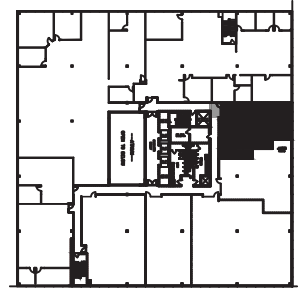
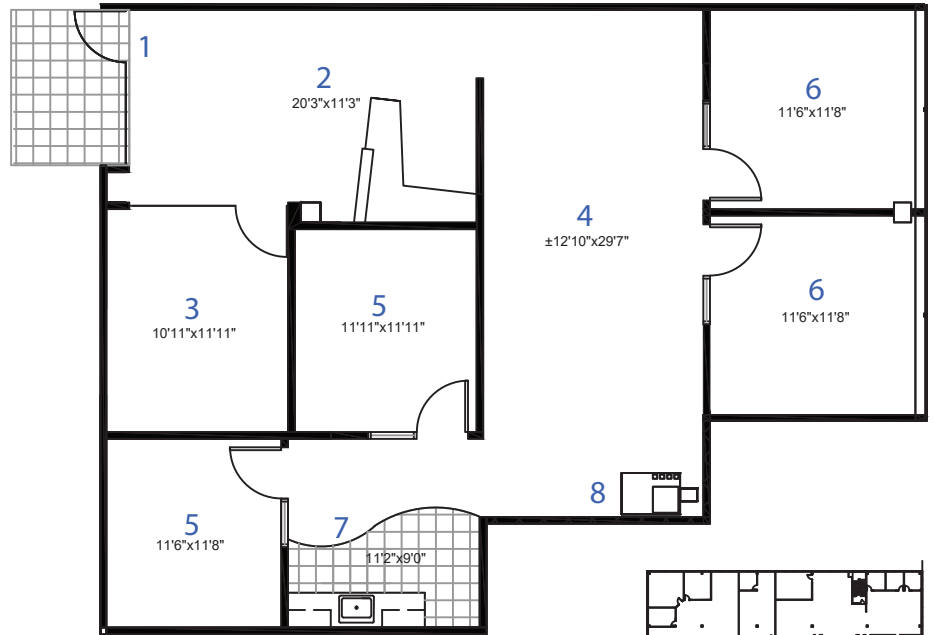


THE ATRIUM

AT CENTERPOINT CORPORATE PARK



KEYPLAN

Open & Collaborative

WORK ENVIRONMENTS

Large Contiguous Spaces for Growing Companies

Pre-Built Insta-Suites for Smaller Companies

Link-Able Suites for Easy Expansion

FNW/01.11.24



FOUNTAINHEAD NORTHWEST LLC

6811 S. 204th Street, Suite 110, Kent, WA 98032

253.395.9226 www.fountainheadnorthwest.com

SUITE 360

2,011 RSF

- (1) Entry
- (2) Reception
- (3) Conference RM
- (4) Cubicle Workstation
- (5) Office
- (6) Executive Office
- (7) Break Room
- (8) Copy Station



ATRIUM BUILDING AMENITIES



SEA-TAC AIRPORT



RACHEL'S BODY SHOP



BRIGHT HORIZONS



FOOD TRUCKS



SKOODER'S HOTDOGS



ONSITE NATURE WALK ROUTES



CONFERENCE CENTER ROOM RENTALS



ONSITE TRANSPORTATION ROUTES

CLOSE TO EVERYTHING

Shopping, hotels, restaurants, entertainment, schools and housing are just a short drive away.

ACCESS TO FOUR MAJOR HIGHWAYS

Interstate 405, Interstate 5, Interstate 405 and Highway 167.

SHORT DRIVING DISTANCES

Southcenter (5 minutes), Kent Station (5 minutes), Sea-Tac (8 minutes), Seattle (20 minutes), Bellevue (25 minutes) and Tacoma (28 minutes).