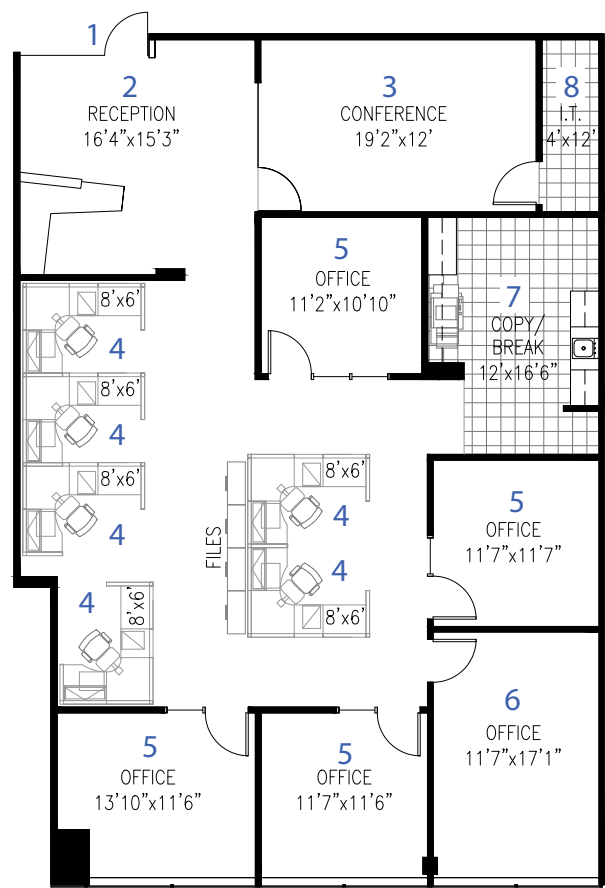


# THE ATRIUM

AT CENTERPOINT CORPORATE PARK



*Open & Collaborative*

## WORK ENVIRONMENTS

Large Contiguous Spaces for Growing Companies

Pre-Built Insta-Suites for Smaller Companies

Link-Able Suites for Easy Expansion

FNW/12.07.23



FOUNTAINHEAD NORTHWEST LLC

6811 S. 204th Street, Suite 110, Kent, WA 98032

253.395.9226 [www.fountainheadnorthwest.com](http://www.fountainheadnorthwest.com)

# SUITE 210

2,866 RSF

- (1) Entry
- (2) Reception
- (3) Conference RM
- (4) Cubicle Workstation
- (5) Office
- (6) Executive Office
- (7) Copy and Break Room
- (8) I.T. and Storage



# ATRIUM BUILDING AMENITIES



SEA-TAC AIRPORT



RACHEL'S BODY SHOP



BRIGHT HORIZONS



FOOD TRUCKS



SKOODER'S HOTDOGS



ONSITE NATURE WALK ROUTES



CONFERENCE CENTER ROOM RENTALS



ONSITE TRANSPORTATION ROUTES

## CLOSE TO EVERYTHING

*Shopping, hotels, restaurants, entertainment, schools and housing are just a short drive away.*

## ACCESS TO FOUR MAJOR HIGHWAYS

*Interstate 405, Interstate 5, Interstate 405 and Highway 167.*

## SHORT DRIVING DISTANCES

*Southcenter (5 minutes), Kent Station (5 minutes), Sea-Tac (8 minutes), Seattle (20 minutes), Bellevue (25 minutes) and Tacoma (28 minutes).*